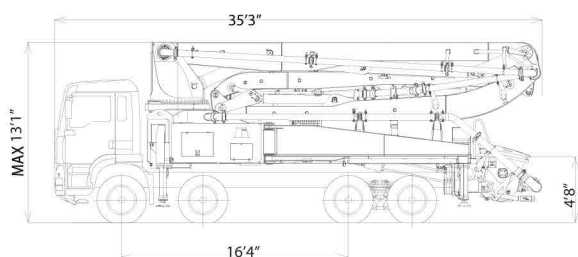


K42L

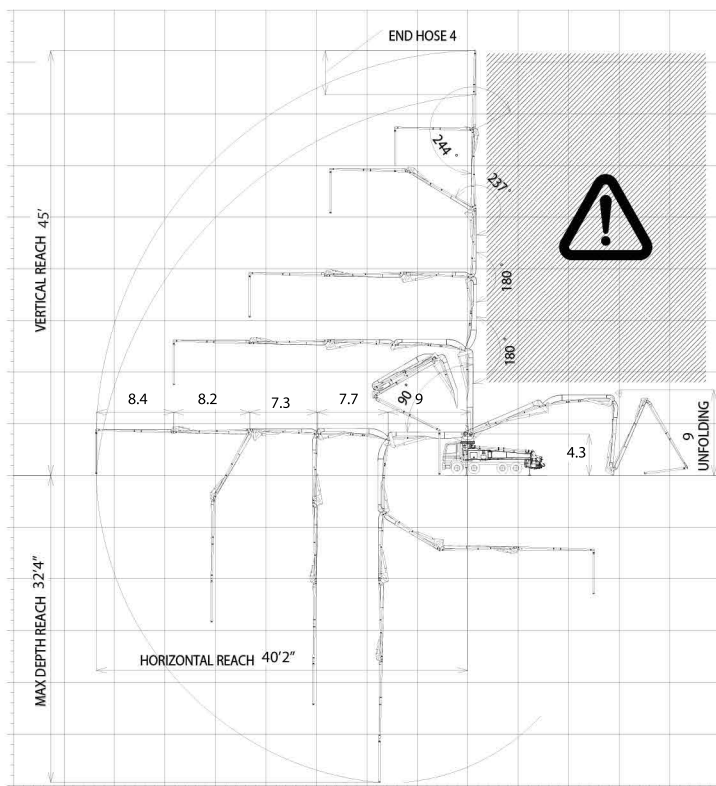
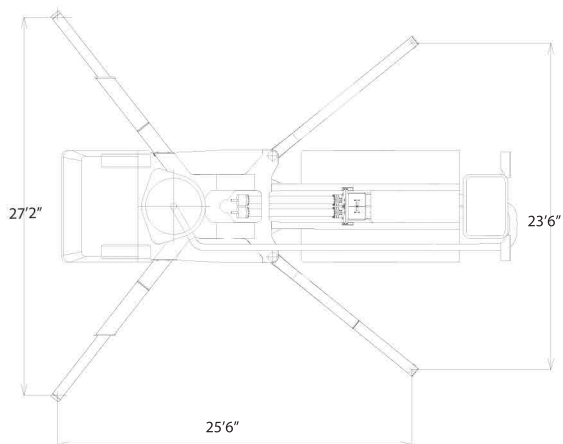
TRUCK-MOUNTED CONCRETE BOOM PUMP	
Placing boom	B5RZ 42/38
Pumping unit	HP1808ECX HP1608EC HP1606H
Driven by	PTO
Chassis	4 axles



Dimensions



Dimensions varying according to truck assembly



K42L

Main features

- Advantageous assembling on standard 4 axles chassis
- Self-supporting frame, torsion free, FEM designed
- Placing boom B5RZ 42/37, 5 sections, pipeline diameter 125 mm, "RZ" folding system
- Fully hydraulic outrigger controls on both sides of the truck
- Front "X" style diagonal outriggers with double telescopic opening and swing-out rear outriggers for a quick and easy set-up also in narrow areas
- "Load Sensing" proportional boom control
- "BFC" Best-Flex Cifa supporting system allowing just one man to change delivery pipeline easily, quickly and safe
- Concrete flow rate regulator
- Safety device on opening inspection hatch
- HP pumping unit with closed circuit and reversal flow: superb performances, high pressures and output, high reliability and easy and reduced maintenance; 9 inches S valve (HP1608EC) or 10 inches S valve (HP1808ECX)
alternatively:
HP pumping system with open circuit: (HP1606H) smooth, continuous and easy pumping, combined with high reliability

Standard equipment

- 2 Proportional radio control with two boom movement speed, synthesizer for automatic frequency search, 8 position joy stick and concrete flow rate regulator. 20 mt cable
- Emergency control pad for pumping unit HP-C
- Remote controlled electric vibrator placed on the concrete hopper grid
- Centralized lubrication system for pumping unit
- Automatic oil lubrication system for pumping pistons on HP-C
- Additional manual lubrication system for pumping unit
- Hard plastic outrigger support plates with relative housing
- Rear light on hopper
- Level readers for stabilization control
- Accessories for cleaning and pipes washing
- Double thickness concrete pipes, in high resistant steel and insert carbide chrome - CIFA Long Life Pipes
- Fiber glass hopper covering

Main optionals

- **L-tronic™**
- **Smartronic™**
- High pressure water pump
- Air compressor for pipeline cleaning
- Centralized lubrication system for placing boom
- Air pipeline for placing boom
- Separated emergency engine kit for independent control of the hopper mixer, concrete pumping unit, boom and water pump

TRUCK-MOUNTED CONCRETE BOOM PUMP

Placing boom	B5RZ 42/38
Pumping unit	HP1808ECX HP1608EC HP1606H
Driven by	PTO
Chassis	4 axles

Pumping unit technical data

Model		HP1808ECX	HP1608EC	HP1606H
Max. theoretical output	yd/h	235	209	209
Max. pressure on concrete	PSI	1203	1160	768
Max. numbers of cycles per min.	nr.	27	31	30
Conc. cylinders (diam. x stroke)	ft	9"x6'9"	8"x6'9"	8"x6'9"
Concrete hopper capacity	yd	.78	.72	.72
Hydraulic circuit		closed	closed	open

Placing boom technical data

Model		B5RZ 42/37
Pipeline diameter	ft	4"
Max. vertical reach	ft	135'
Max. horizontal distance (from center of slewing axis)	ft	120'7"
Min. unfolding height	ft	27'2"
Section numbers		5
1st section opening angle		90°
2nd section opening angle		180°
3rd section opening angle		180°
4th section opening angle		237°
5th section opening angle		244°
Rotating angle		370°
End hose lenght	ft	13'1"

Technical data and characteristics subject to modifications without notice