



Powerful Synergies



[cps-group.com](http://cps-group.com)



**COPMA**  
158

**ESSENTIAL  
MODEL**

# COPMA 158

Performance & Power

**158 IS INNOVATIVE ENGINEERING  
FOR TOP PRECISION, EFFICIENCY,  
SPEED AND PERFORMANCE.  
AN ESSENTIAL MASTERPIECE  
OF LIFTING TECHNOLOGY.**

- **ESSENTIAL model, load category - 15 Ton/Mt.**
- **Essential in design, powerful in performance**
- **Robust arm system**
- **Simple and reliable**
- **Excellent operational safety**







**THE MOST  
POWERFUL  
CRANE FOR  
THE TOUGHEST  
MARKETS**



# COPMA 158

More Safety & Security

**DESIGNED WITH THE HIGHEST  
HYDRAULIC SYSTEMS AND THE  
TOUGHEST STRUCTURAL STEEL  
TO PERFORM THE MAXIMUM  
LIFTING CAPACITY.**

- **Optimized and reliable hydraulic technology**
- **Column with high mechanical characteristics**
- **High Degree of User Friendliness**
- **Efficiency and Reliability thanks to essential design**
- **Excellent weight/performance ratio**







**DESIGNED  
FOR FLEXIBLE  
SERVICES**



# COPMA 158

## Technical Features

**CUTTING EDGE FEATURES  
FOR MAXIMUM LIFTING  
POWER, STABILITY AND  
OPERATIONAL SAFETY IN EVERY  
WORKING CONDITION.**

### Standard features

- control



- structure



### optional features

- easy use



- control



\*E.C. market specific equipment







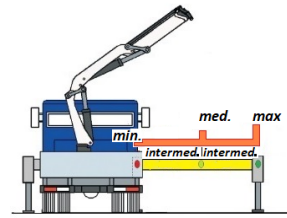
## Transport Alert Device

Sensors on the basement control the correct closing of the beams and a column switch sensor indicates if the crane is in a folded position, no more than 4 Mt in height. The operator is warned with light and sound signals in the truck cabin.



## Truck Electronic Stability 2.0

Active stability control for performance optimization according to the type of stabilization (2) to guarantee maximum safety in all working conditions. Mandatory in the CE market, it helps a better vehicle-crane configuration.



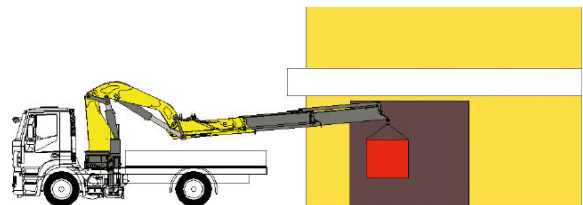
## Crane Monitoring System 1.0

Crane stability control system TES1-TES2, safety control and overload control for medium-small cranes. Controlling the crane in 4 work areas, each area can have custom lifting settings depending on the vehicle stability.



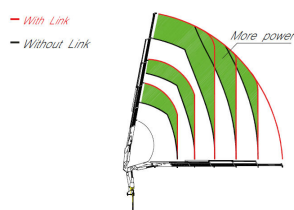
## Negative Boom System

The linkage on the articulation of the secondary boom permits the introduction of loads within restricted spaces. It enables the recovery of the deflection of the extension boom group due to the weight and the load raised on the extensions.



## Constant Control Link

The cranes equipped with connecting rods on the articulations, with a constant lifting moment over the entire working arc, allow to 100% optimize the crane's capacity in positions close to the maximum vertical.



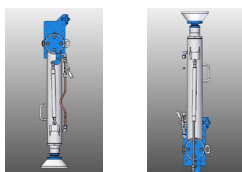
## Rotation Rack Pinion

The rotation system with rack and pinion is the best optimal solution for the most performative lifting capacity, it reduce the weights and crane dimension for the most compact configuration.



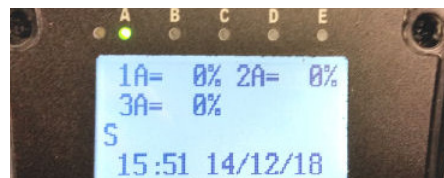
## Manual Lifting Stabilizers 2.0

Manual raising of the stabilizers facilitated by a compressed gas cylinder which assists the operator during the rotation of the jack. This system assists the operator with less effort in adjusting the legs.



## Electronic Radio Display

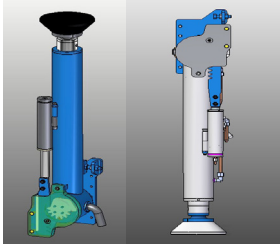
A display on the remote control allows the operator to maintain the total control of all the crane functions in real time by managing the work mode, the stability control, and oversee any maintenance and diagnostic messages.





### Hydraulic Lifting Stabilizers 2.0

The cylinder of the stabilizer is lifted with an auxiliary jack, allowing the vertical movement within the bushes or rotating around a pin. It saves operative time in increasing the security of the setup.



### High Speed Extension

Hydraulic system for reducing load losses and bottlenecks for the correct output sequence of the extensions by increasing the speed of 30%-60% thanks to the regenerative valve. Greater continuous performance thanks to lower fluid temperature.



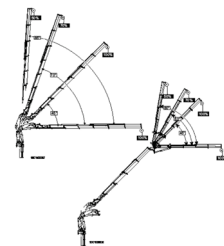
### Radio Remote Control 3.0

Radio control with directly flanged actuation electronics with proportional distribution. The remote control allows operating the crane while constantly monitoring the areas of operation.



### Winch Linear Control

The winch linear electronic control allows pulling the rope according to the working angle of the crane and the JIB . It optimize the load control and makes every movement easier and safer.



### Crane Monitoring System 2.0

Crane stability control system TES2-TES3 with safety and overload controls and HPVE lifting speed management. Active control on 4-8 working areas according to the model and vehicle stability requirements.

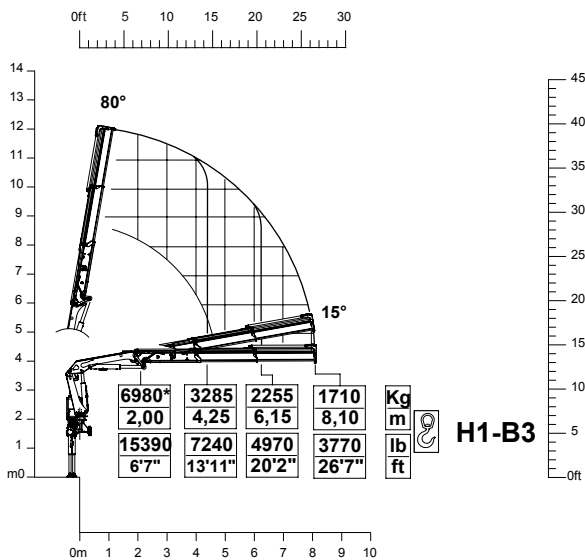




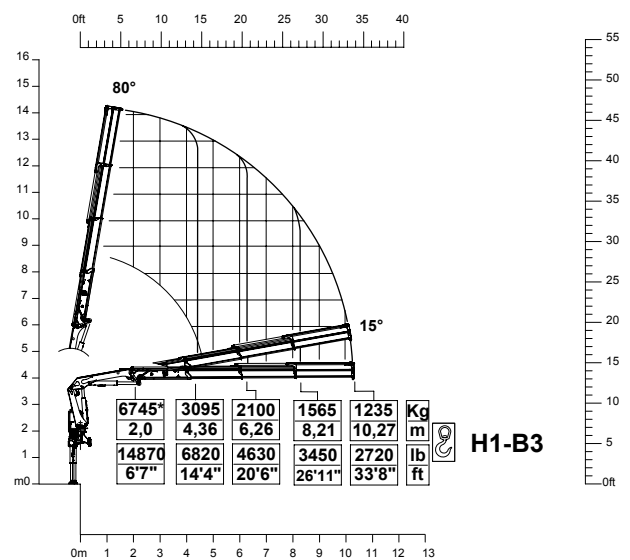
# 158 ESSENTIAL

## Load Charts

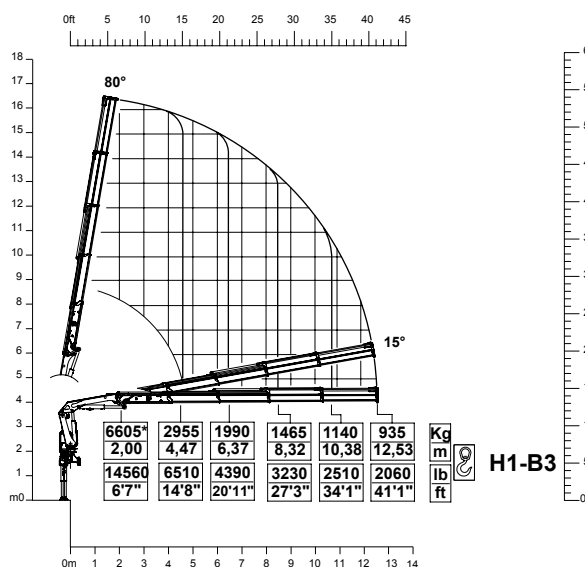
2 extensions



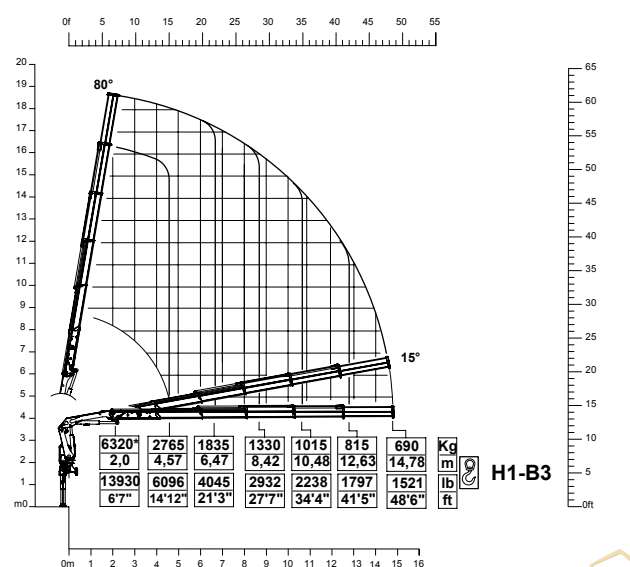
3 extensions



4 extensions



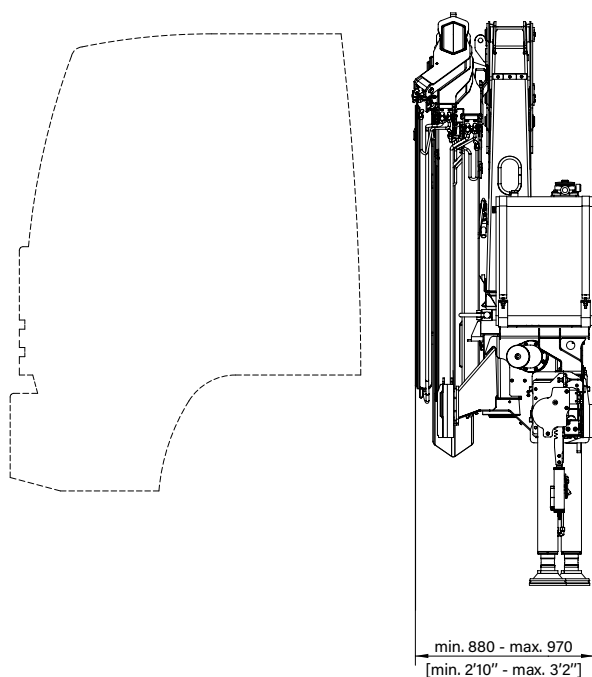
5 extensions



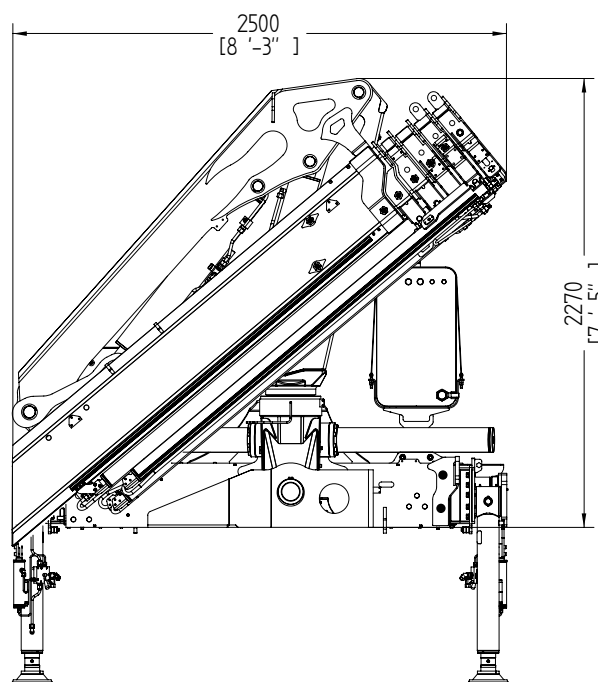
# 158 ESSENTIAL

## Crane Dimensions

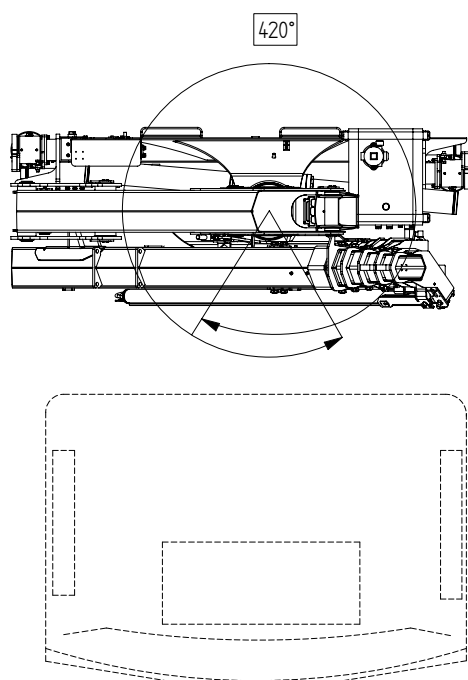
back cabin left



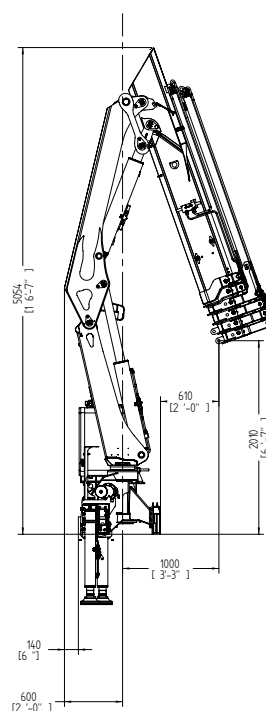
rear truck



top cabin

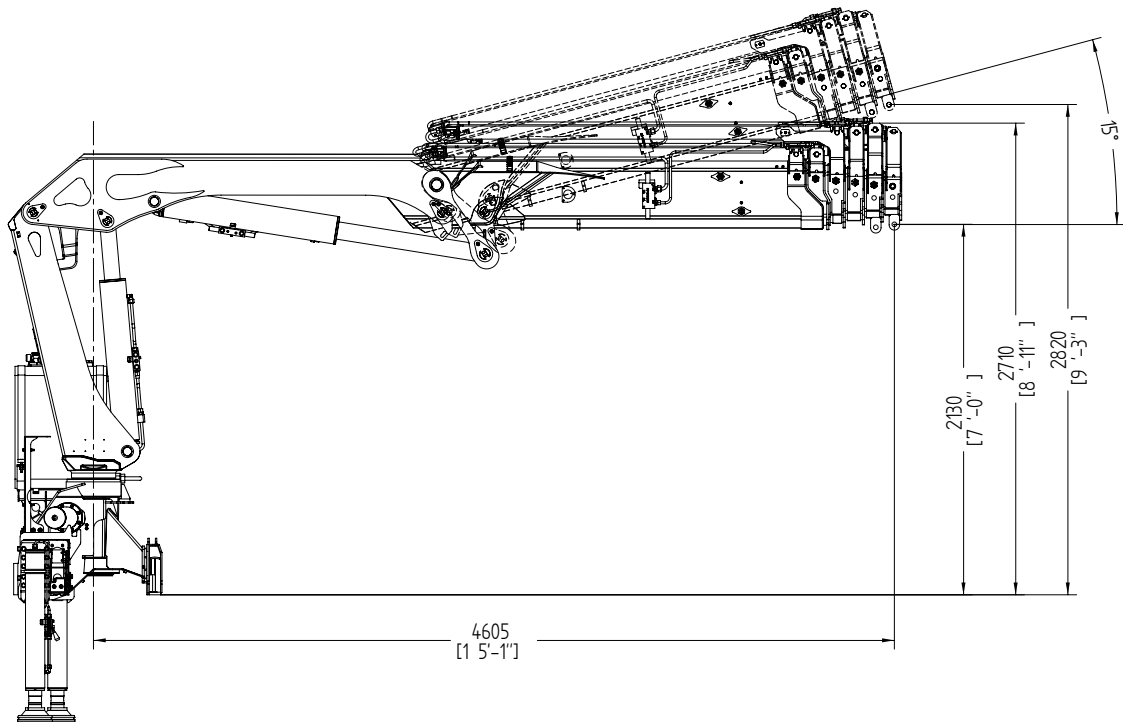


operational

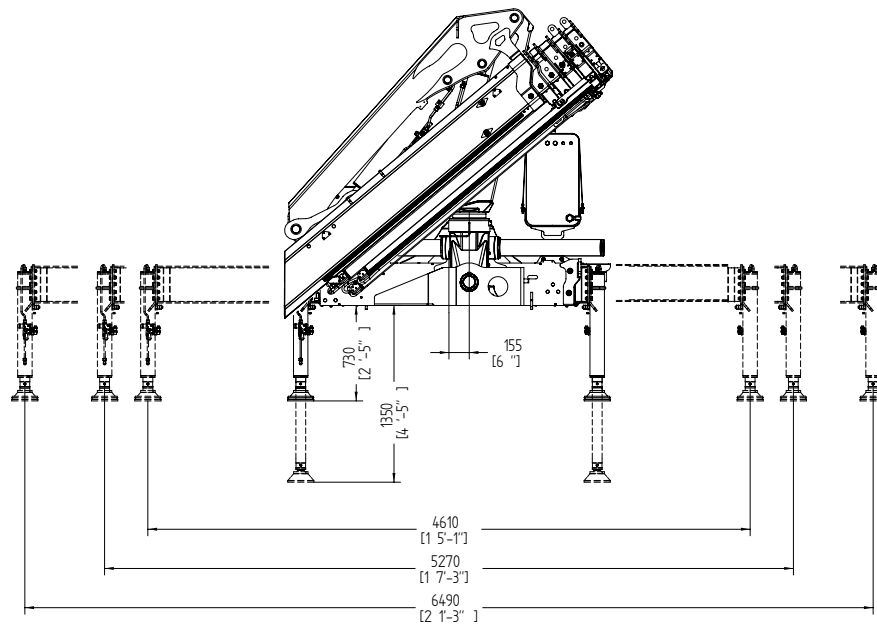




## operational



## extended outriggers












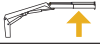
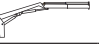
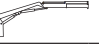






\* Note:  
 Technical features are not binding.  
 The company reserves itself the right to any modification without notice



## Technical Data

### summarized data

									
	kN.m	bar	l/min	kg	°	mm	mm	mm	mm
158.2	137	305	40	1800	420	2500	880	2270	4600/5270/6500
158.3	132,5	305	40	1920	420	2500	880	2270	4600/5270/6500
158.4	129,7	305	40	2030	420	2500	910	2270	4600/5270/6500
158.5	123,9	305	40	2135	420	2500	970	2270	4600/5270/6500

									
	lbs.ft	psi	gal/min	lbs	°	ft/inc	ft/inc	ft/inc	ft/inc
158.2	101011	4425	10,57	3968	420	8'2"	2'10"	7'5"	15'1"-17'3"-21'3"
158.3	97693	4425	10,57	4232	420	8'2"	2'12"	7'5"	15'1"-17'3"-21'3"
158.4	95629	4425	10,57	4784	420	8'2"	3'	7'5"	15'1"-17'3"-21'3"
158.5	91352	4425	10,57	4706	420	8'2"	3'2"	7'5"	15'1"-17'3"-21'3"

### technical data

Max. lifting moment	137 kNm	101011 ft.lbs
Max. hydraulic outreach	14.85 m	48'72"
Slewing angle	420°	420°
Slewing torque	1900 daNm	14009 ft.lbs
Stabilizer spread	4.60/5.27/6.5 mt	15'1" / 17'3" 21'3"
Fitting space required (min./max)	0.80 m/0.97 m	2'10"/3'2"
Width folded	2,50 m	8'2"
Max. operating pressure	305 bar	4425 psi
Recommended pump capacity	40 l/min	10.57 US gal./min
Dead weight (vers .2)	1800 kg	3968 lbs

\* Note:  
Technical features are not binding.  
The company reserves itself the right to any modification without notice







**SUPERIOR  
RELIABILITY  
FOR EVERY  
OPERATOR**









GET READY TO A  
BETTER LIFTING  
EXPERIENCE

# COPMA 158



knuckle  
boom  
cranes



Powerful Synergies



**CPS**



**CPS  
STEEL**

## CPS GROUP S.P.A.

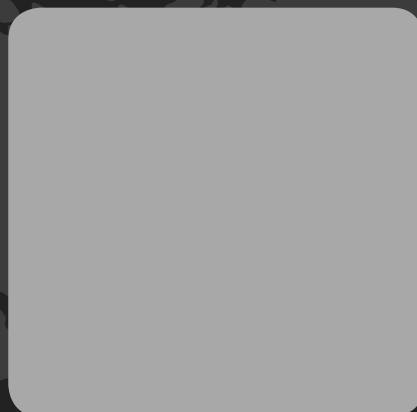
281 Via Emilia , Castel Bolognese (RA) , 48018  
Italy

T +39 0546 653 711

[sales.cpsgroup@cps-group.com](mailto:sales.cpsgroup@cps-group.com)

[service.cpsgroup@cps-group.com](mailto:service.cpsgroup@cps-group.com)

[cps-group.com](http://cps-group.com)



UNICERT  
ISO 9001:2008



COPMA MODEL 158 ESSENTIAL-3-2019 all rights reserved CPS GROUP S.P.A.