



Powerful Synergies



# COPMA

220

**HIGH POWER  
MODEL**



014 8  
014 8  
@jann

# COPMA 220

Performance & Power

**220 HAS THE HIGHEST LIFTING RANGE AND TOP POWER-WEIGHT RATIO COMBINING ADVANCED TECHNOLOGY FEATURES FOR MORE PERFORMANCE.**

- **HIGH POWER model, load category - 22 Ton/Mt**
- **Designed for every kind of job**
- **Strong linkage system on each arm to get maximum performance**
- **Precise and fast work execution**
- **High safety standards**





**THE MOST  
POWERFUL  
CRANE FOR  
THE TOUGHEST  
MARKETS**



# COPMA 220

More Safety & Security

**DESIGNED WITH THE HIGHEST  
HYDRAULIC SYSTEMS AND THE  
TOUGHEST STRUCTURAL STEEL  
TO PERFORM THE MAXIMUM  
LIFTING CAPACITY.**

- **Performing and reliable electronic devices**
- **Column with high mechanical characteristics**
- **High Degree of User Friendliness**
- **Ready to work in a few movements**
- **Excellent weight/performance ratio**





**DESIGNED  
FOR FLEXIBLE  
SERVICES**

# COPMA 220

## Technical Features

**CUTTING EDGE FEATURES  
FOR MAXIMUM LIFTING  
POWER, STABILITY AND  
OPERATIONAL SAFETY IN EVERY  
WORKING CONDITION.**

### Standard features

▪ easy use



▪ control



▪ structure



### optional features

▪ easy use



▪ control



\*E.C. market specific equipment



**HSE**  
easy use  
**High Speed Extension**

Hydraulic system for reducing load losses and bottlenecks for the correct output sequence of the extensions by increasing the speed of 30%-60% thanks to the regenerative valve. Greater continuous performance thanks to lower fluid temperature.



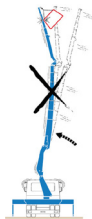
**CMS**  
2.0  
control  
**Crane Monitoring System 2.0**

Crane stability control system TES2-TES3 with safety and overload controls and HPVE lifting speed management. Active control on 4-8 working areas according to the model and vehicle stability requirements.



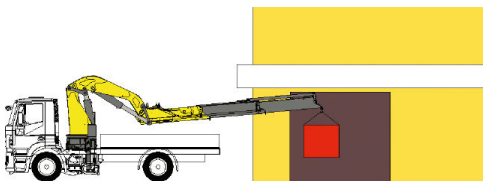
**NCS**  
control  
**Negative Control System**

Slope sensors mounted on the articulated booms of the crane, combined with the electronic control, control the maximum vertical angle of the arms and the JIB preventing incorrect or dangerous movements by the operator.



**NBS**  
structure  
**Negative Boom System**

The linkage on the articulation of the secondary boom permits the introduction of loads within restricted spaces. It enables the recovery of the deflection of the extension boom group due to the weight and the load raised on the extensions.



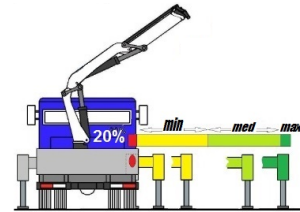
**TAD**  
control  
**Transport Alert Device**

Sensors on the basement controls the correct closing of the beams and a column switch sensor indicates if the crane is in a folded position, no more than 4 mt in height. The operator is warned with light and sound signals in the truck cabin.



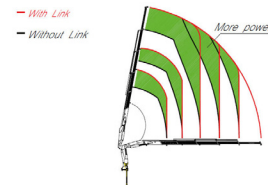
**TES**  
3.0  
control  
**Truck Electronic Stability 3.0**

Active stability control for performance optimization according to the type of stabilization (3) to guarantee maximum safety in all working conditions. Mandatory in the CE market, it helps a better vehicle-crane configuration.



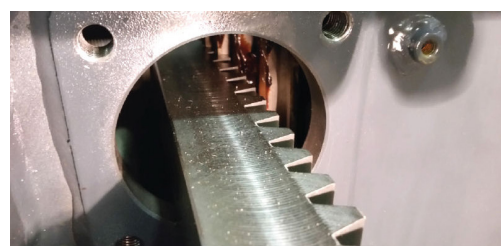
**CCLS**  
structure  
**Constant Control Link**

The cranes equipped with connecting rods on the articulations, with a constant lifting moment over the entire working arc, allow to 100% optimize the crane's capacity in positions close to the maximum vertical.



**RRP**  
structure  
**Rotation Rack Pinion**

The rotation system with rack and pinion is the best optimal solution for the most performative lifting capacity, it reduce the weights and crane dimension for the most compact configuration.





### Hydraulic Lifting Stabilizers 2.0

The cylinder of the stabilizer is lifted with an auxiliary jack, allowing the vertical movement within the bushes or rotating around a pin. It saves operative time in increasing the security of the setup.



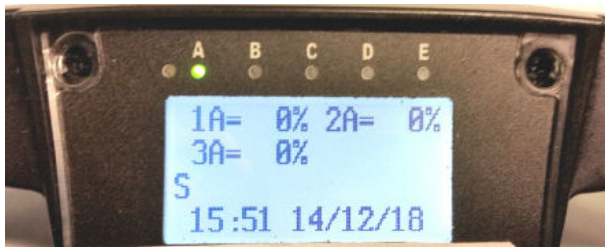
### Radio Remote Control 3.0

Radio control with directly flanged actuation electronics with proportional distribution. The remote control allows operating the crane while constantly monitoring the areas of operation.



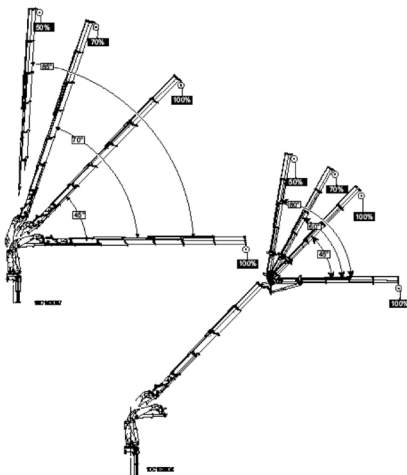
### Electronic Radio Display

A display on the remote control allows the operator to maintain the total control of all the crane functions in real time by managing the work mode, the stability control, and oversee any maintenance and diagnostic messages.



### Winch Linear Control

The winch linear electronic control allows pulling the rope according to the working angle of the crane and the JIB. It optimizes the load control and makes every movement easier and safer.



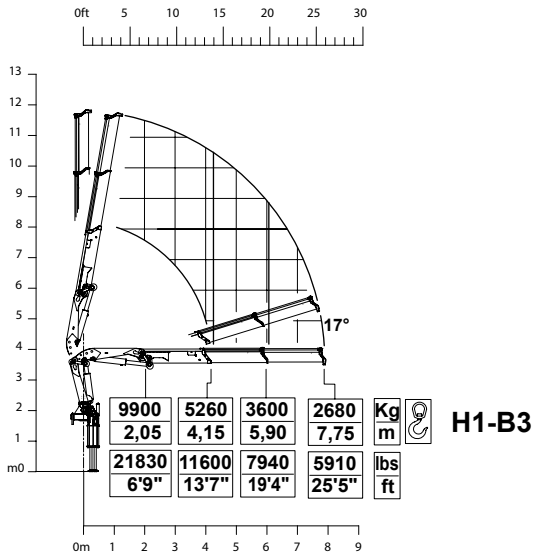


# 220 HIGH POWER

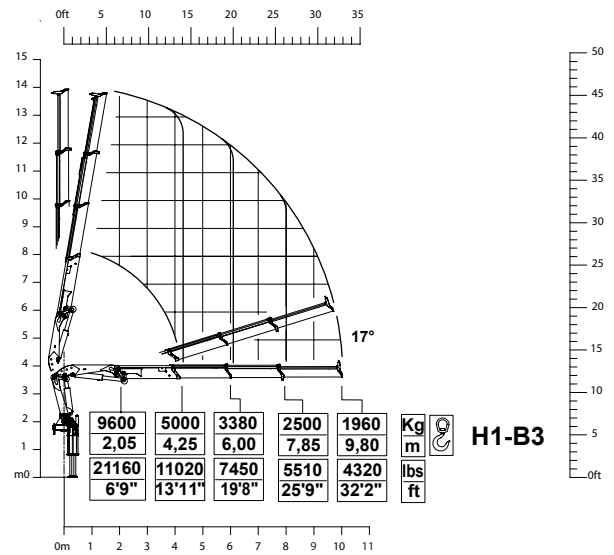
## Load Charts

2

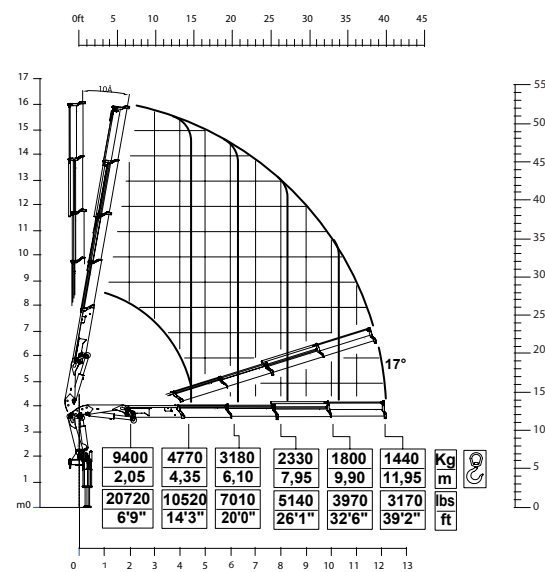
### 2 extensions



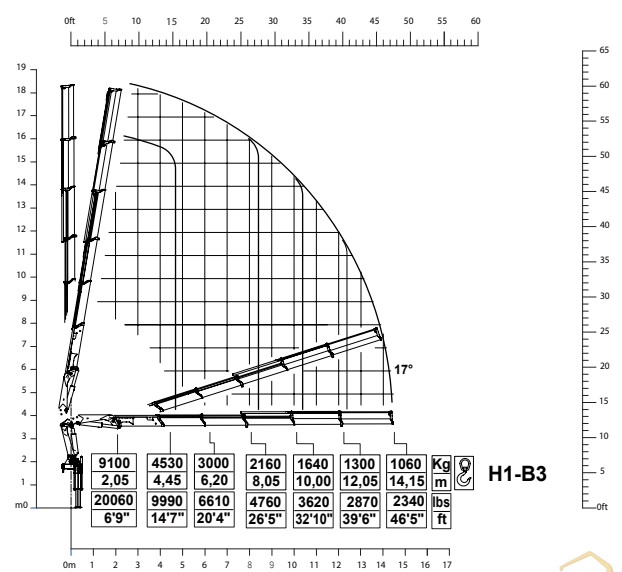
### 3 extensions



### 4 extensions



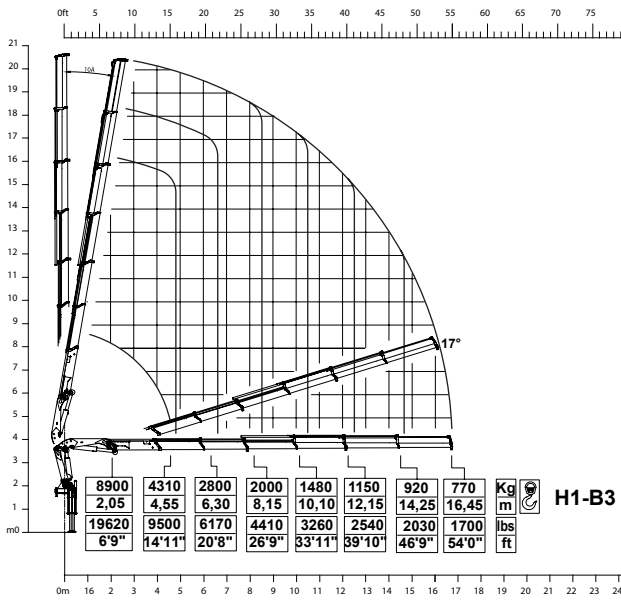
### 5 extensions



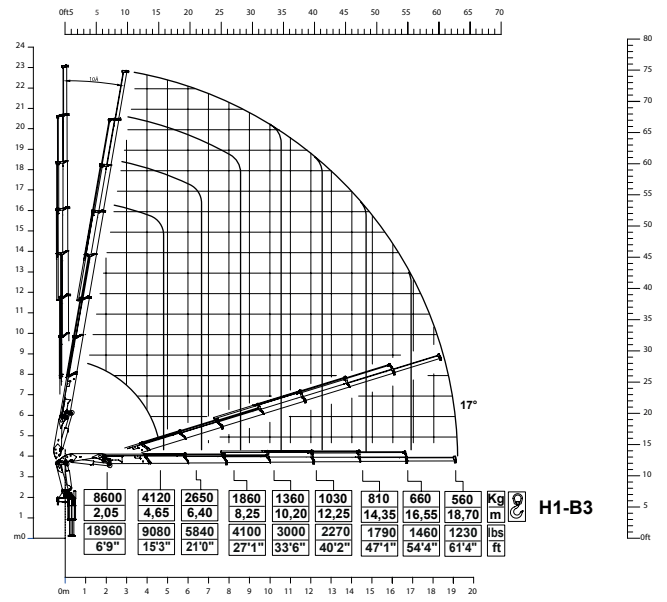
\*CARICO AL GANCIO FISSO A RICHIESTA  
\*CAPACITY AT FIXED HOOK ON DEMAND



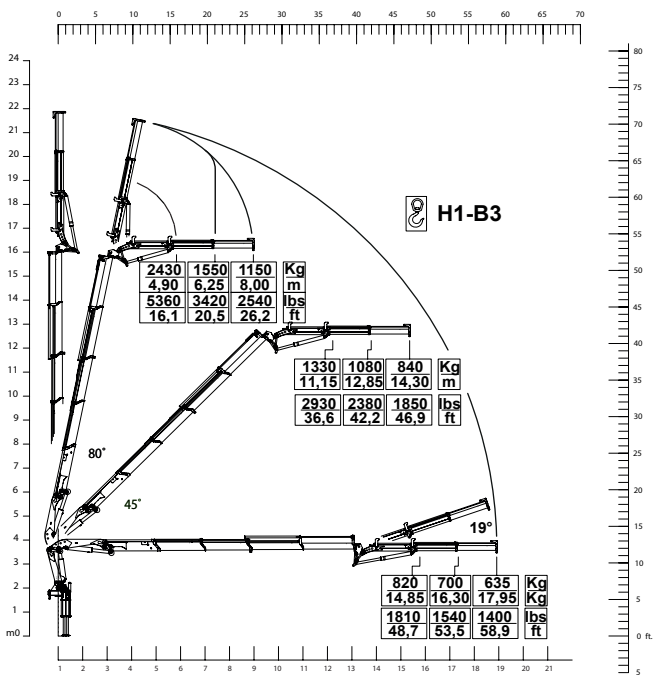
### 6 extensions



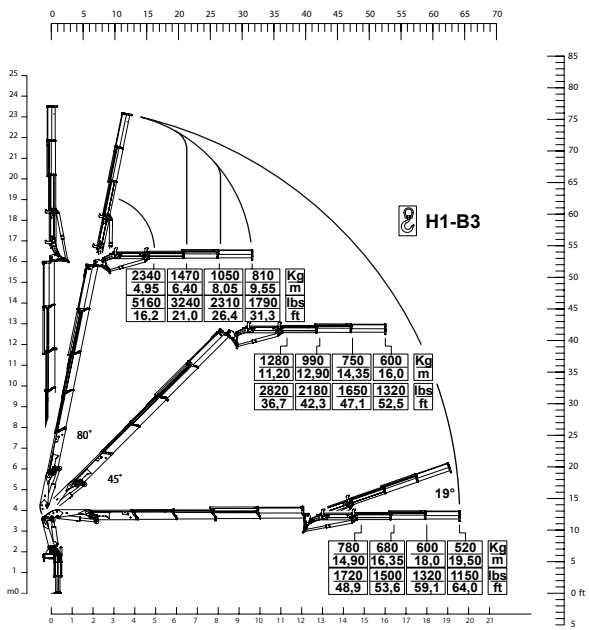
### 7 extensions



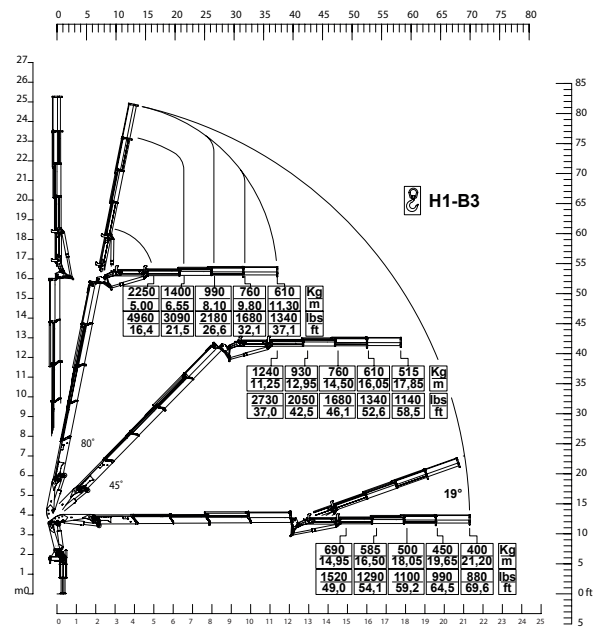
### 220.4 + J2



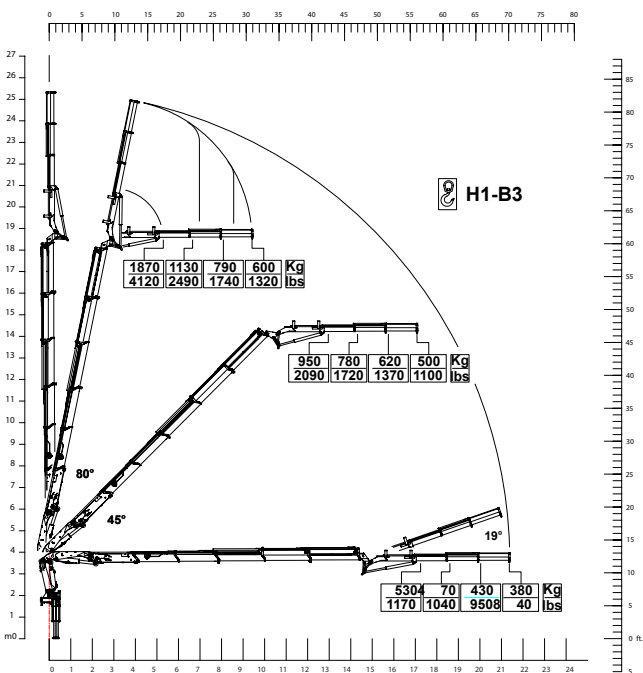
220.4 + J3



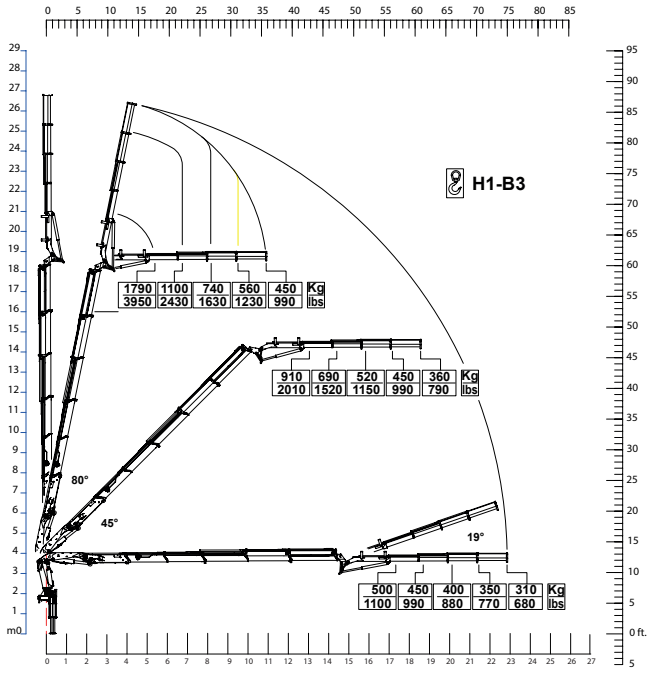
220.4 + J4



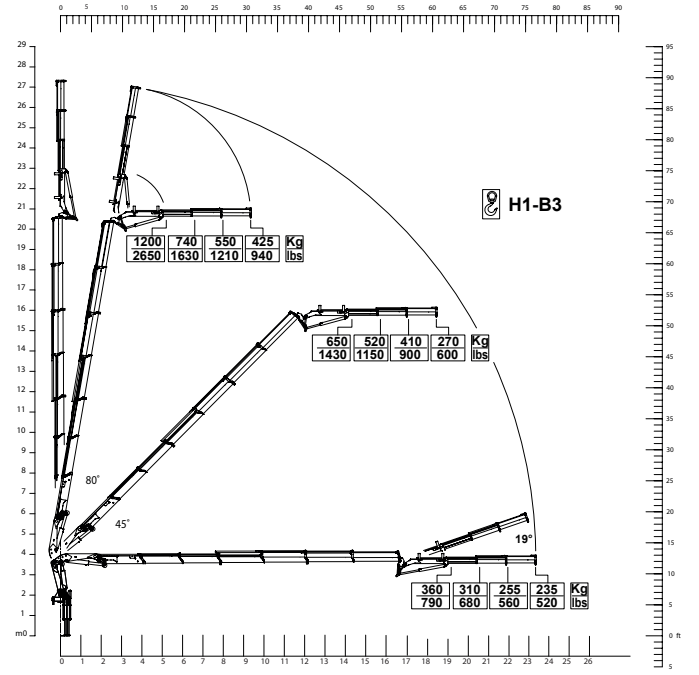
220.5 + J3



220.5 + J4



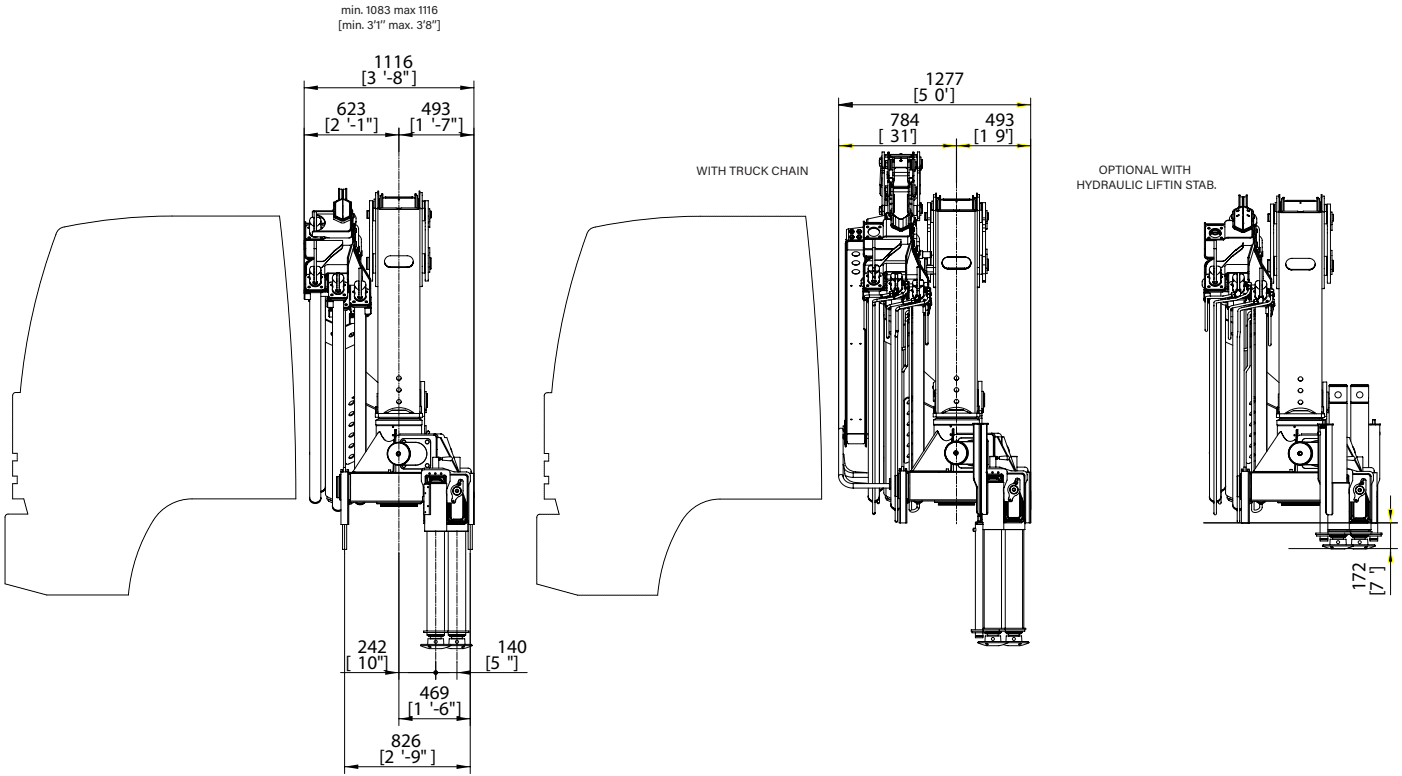
220.6 + J3



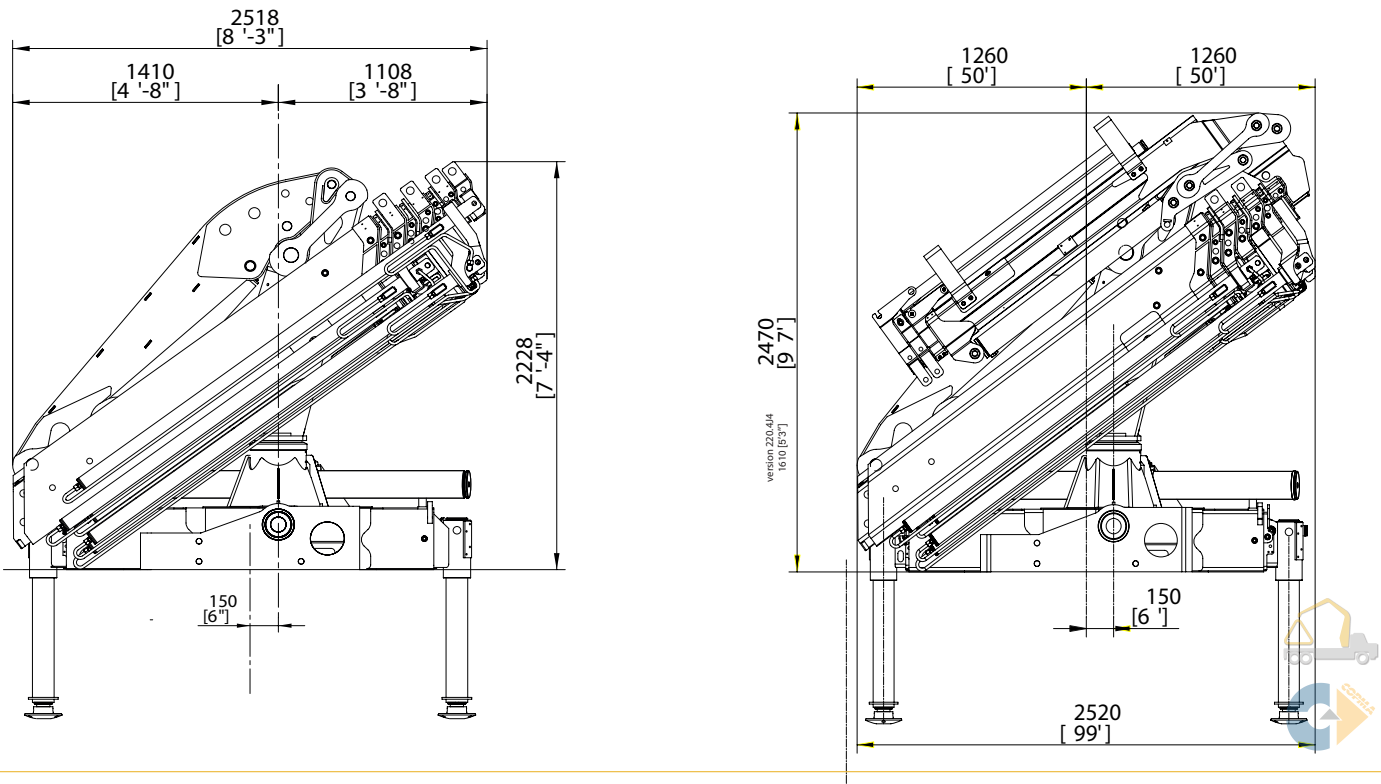
# 220 HIGH POWER

## Crane Dimensions

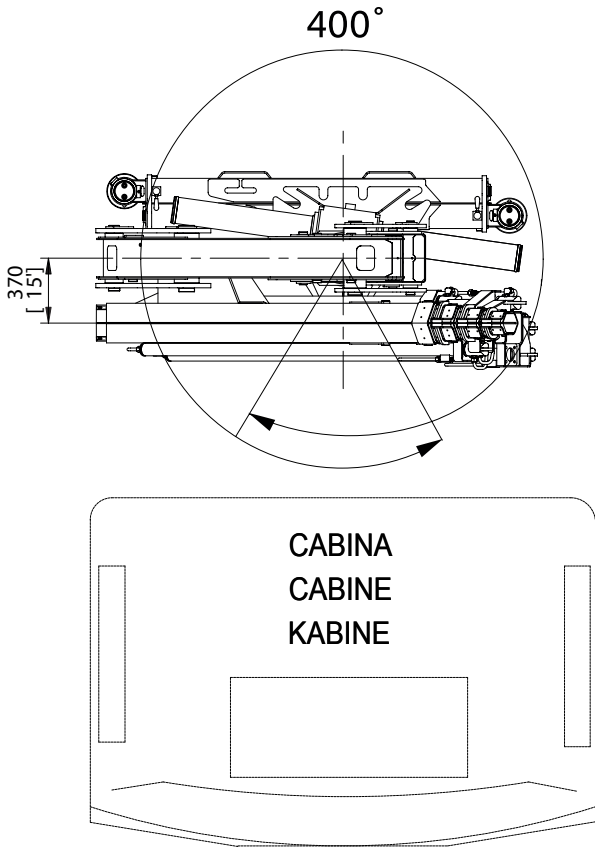
### back cabin left



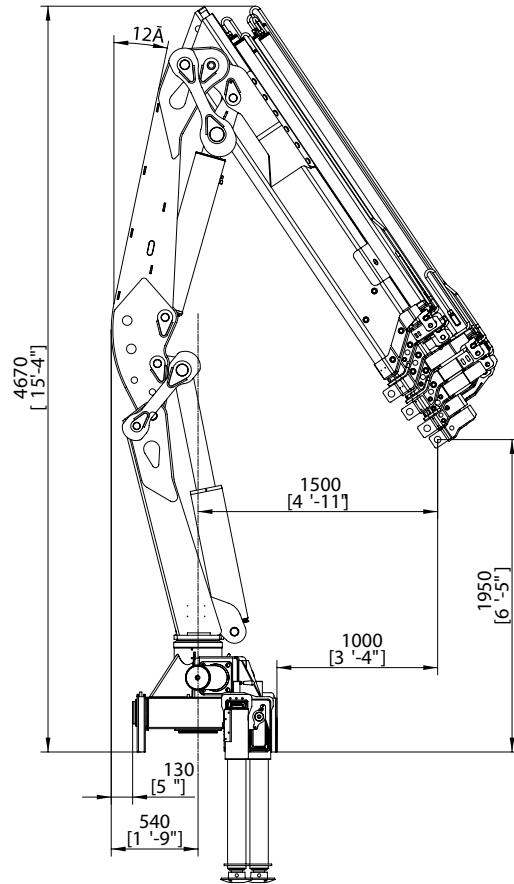
### rear truck



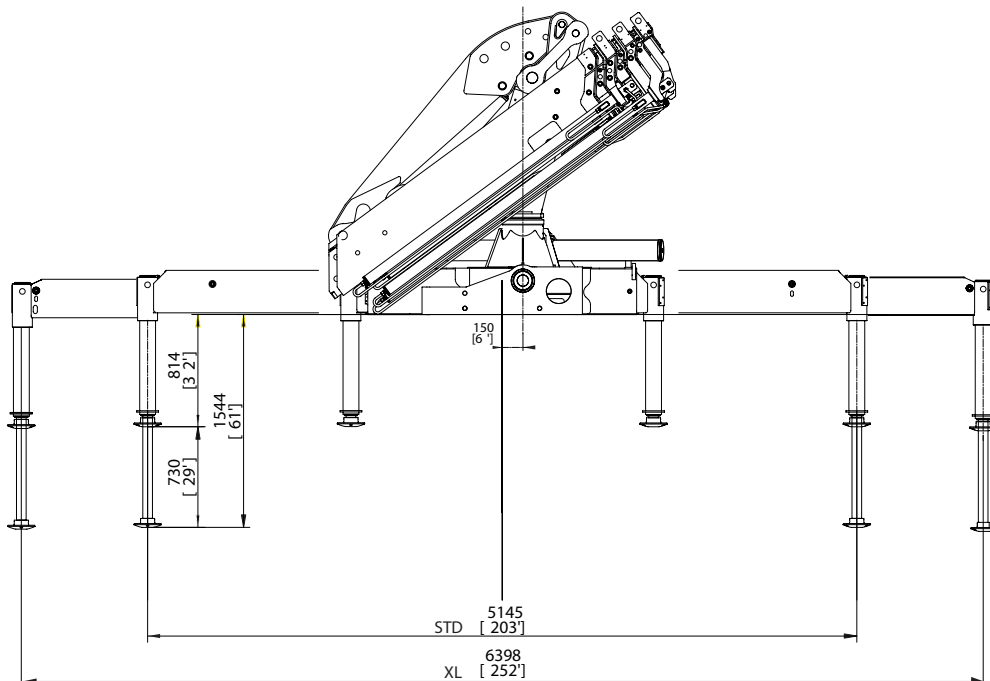
top cabin



operational



extended outriggers












\* Note:  
Technical features are not binding.  
The company reserves itself the right to any modification without notice












# 220 HIGH POWER

## Technical Data

### summarized data

									
	kN.m	bar	l/min	kg	°	mm	mm	mm	mm
220.2	214	280	40	2870	400	2453	1083	2194	5200/6400
220.3	208,5	280	40	3024	400	2453	1083	2194	5200/6400
220.4	203,6	280	40	3170	400	2453	1127	2194	5200/6400
220.4J2	203,6	280	40	3530	400	2480	1267	2610	5200/6400
220.4J3	203,6	280	40	3606	400	2480	1267	2610	5200/6400
220.4J4	203,6	280	40	3745	400	2480	1267	2610	5200/6400
220.5	197,82	280	40	3310	400	2518	1127	2194	5200/6400
220.5J3	197,82	280	40	3748	400	2518	1267	2470	5200/6400
220.5J4	197,82	280	40	3790	400	2518	1267	2470	5200/6400
220.6	192,44	280	40	3430	400	2518	1116	2194	5200/6400
220.6J3	192,44	280	40	3866	400	2520	1277	2470	5200/6400
220.7	188,45	280	40	3532	400	2518	1116	2194	5200/6400

									
	lbs.ft	psi	gal/min	lbs	°	ft/inc	ft/inc	ft/inc	ft/inc
220.2	154889	4060	10,5	6330	400	8'1"	3'7"	8'6"	16'11" / 21'0"
220.3	150781	4060	10,5	6720	400	8'1"	3'7"	8'6"	16'11" / 21'0"
220.4	147780	4060	10,5	6990	400	8'1"	3'8"	8'6"	16'11" / 21'0"
220.4J2	147780	4060	10,5	7780	400	8'2"	4'2"	10'3"	16'11" / 21'0"
220.4J3	147780	4060	10,5	7950	400	8'2"	4'2"	10'3"	16'11" / 21'0"
220.4J4	147780	4060	10,5	8300	400	8'2"	4'2"	10'3"	16'11" / 21'0"
220.5	143571	4060	10,5	7300	400	8'3"	3'8"	8'6"	16'11" / 21'0"
220.5J2	143571	4060	10,5	8260	400	8'3"	4'2"	9'7"	16'11" / 21'0"
220.5J3	143571	4060	10,5	8360	400	8'3"	4'2"	9'7"	16'11" / 21'0"
220.6	139670	4060	10,5	7560	400	8'3"	3'8"	8'6"	16'11" / 21'0"
220.6J3	139670	4060	10,5	8520	400	8'3"	5'0"	9'7"	16'11" / 21'0"
220.7	136780	4060	10,5	7790	400	8'3"	3'8"	8'6"	16'11" / 21'0"

### technical data

Max. lifting moment	214 kNm	120845 ft.lbs
Max. hydraulic outreach	18.70 m	61'4"
Slewing angle	400°	400°
Slewing torque	3270 daNm	23652 ft.lbs
Stabilizer spread	5.14/6.4 mt	16'11" / 20'12"
Fitting space required (min./max)	1,08 m/1.27 m	3'1" / 5'0"
Width folded	2,52 m	8'3"
Max. operating pressure	280 bar	4060 psi
Recommended pump capacity	40 l/min	10,5 US gal./min
Dead weight (vers .2)	2870 kg	6330 lbs

\* Note: technical features are not binding, the company reserves itself the right to any modification without notice



# COPMA 220



knuckle  
boom  
cranes



Powerful Synergies



**CPS**



**CPS  
STEEL**

## CPS GROUP S.P.A.

281 Via Emilia , Castel Bolognese (RA) , 48014  
Italy

T +39 0546 653 711

[sales.cpsgroup@cps-group.com](mailto:sales.cpsgroup@cps-group.com)

[service.cpsgroup@cps-group.com](mailto:service.cpsgroup@cps-group.com)

[cps-group.com](http://cps-group.com)



COPMA MODEL 220 HIGH POWER 6-2019 all rights reserved CPS GROUP

UNICERT  
ISO 9001:2008

