

LIFTING EXPECTATIONS

# 75XR SERIES

# SERCO

**LOADERS**  
A GRYB COMPANY



# LIFTING EXPECTATIONS

For those that require a lightweight yet powerful loader, the SERCO 75XR was developed for you. Whether you are handling pipeline materials or heavy sawlogs, and pulpwood, the 75XR will make your job easier.

## Lift Capacity

8,136 lbs. lift capacity at 10 ft. radius (less weight of attachment).

## Boom Reach

22ft. knuckleboom options to 26ft. 22ft. and 23ft. boom with 3ft and 4ft. squirt (25ft-27ft. overall).

## Rotation

572 degrees on double-row turntable bearing.

## Stabilizers

Telescoping A-frame type with 110-5/8" spread at grade level for adjustment on uneven terrain.

## Hydraulic System

Tandem hydraulic circuits to allow simultaneous operation without power loss.

Tandem gear pump providing 30 & 30 GPM at 1,400 pump RPM.

Stack type control valves located under seat for increased operator visibility and safety.

55 gallon truck frame mounted hydraulic reservoir with high capacity, 10-micron return line filter and removable access cover.

Folding joystick controls standard. 4-wire reinforced hoses in all pressure applications.

Oversize main pressure and return lines with bent tube-type fittings to eliminate heat problems.

## Miscellaneous

- LED light kits.
- Full range of attachments including continuous rotation grapples.
- Three-point greasing system for turntable bearing and pinion gear.
- Side-mounted aluminum tank built to SERCO specifications.
- Seat belt included.
- Bolt-on gland cylinders.

GRYB International presents Byron Man! This is the official teaser trailer of our vlog series pilot.

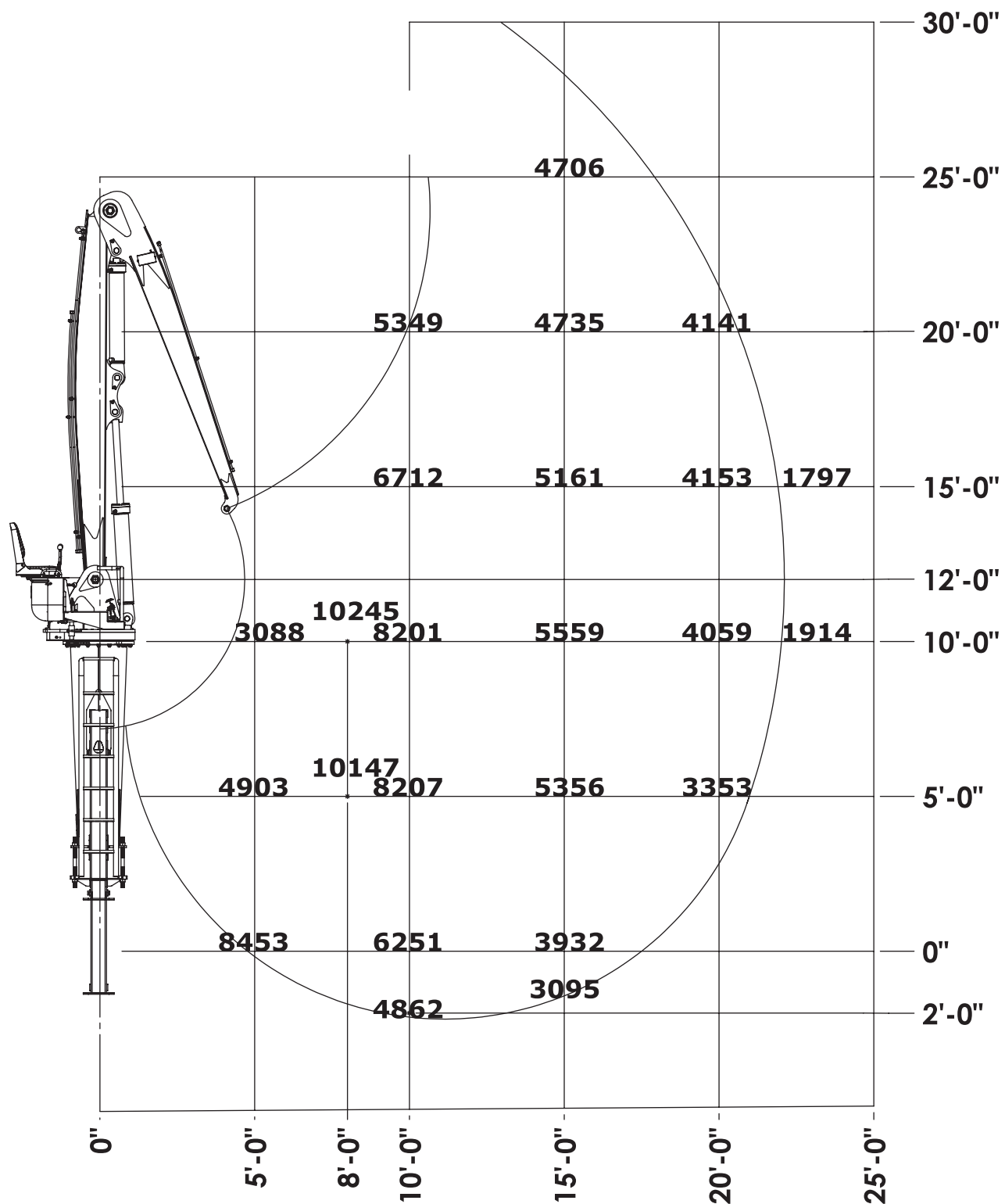
We saw a few different kind of attachments in this teaser, which are you most excited to see?

Check out our full range of more videos leading to our official

# NEXT-LEVEL PERFORMANCE

## LIFT DIAGRAM

Capacities shown are maximum theoretical lift capacities based on loader system pressure rating indicated, loader is mounted on adequately sized vehicle, stabilizers deployed in down position and the entire unit is on firm, level ground. It is highly recommended that prior to installation of this loader onto truck that operation of loader on customer vehicle.



# SERCO 75XR

### KEY SPECIFICATIONS- SERCO 75XR

Structure	Fabricated box type main & jib booms backed by the industry best, 3-year structural warranty
Pivots	2.5" boom pivots, 2" cylinder pivots
A-Frame Stabilizers	3" x 40" cylinders
Complete Motion	Main boom: 5.2 sec full down - full up Jib boom: 5.2 sec full in - full out
Slewing Ring	27.31" (693.67 mm) diameter, external tooth
Rotation Speed	17.6 RPM
Weight	6,300 lbs. (2,858 kg)
Operating Pressure	3,200 psi (221 bar)
Swing Torque	16,581 ft. lbs

### BOOM LENGTH OPTIONS- SERCO 75XR

Standard	22' (6.7 m)
Non-Telescopic	23' (7 m), 24' (7.3 m), 25' (7.6 m) & 26' (7.92 m). Most common 25'
Telescopic	22', 23'. 3' (0.91 m) & 4' (1.2m) squirt extension. Maximum length 27' (8.23 m)

### SERCO 75XR (22 ft./6.7 m) LOADER LIFT CAPACITY (lb/kg)

		DISTANCE FROM CENTER OF ROTATION (ft./m)			
HEIGHT		5 FT. / 1.5 m	10 FT. / 3 m	15 FT. / 4.5 m	20 FT. / 6 m
SERCO 75XR	30 ft. / 9 m				
	25 ft. / 7.5 m			4,706 / 2,135	
	20 ft. / 6 m		5,349 / 2,426	4,735 / 2,148	4,141 / 1,878
	15 ft. / 4.5 m		6,712 / 3,045	5,161 / 2,341	4,153 / 1,884
	10 ft. / 3 m	3,088 / 1,401	8,201 / 3,720	5,559 / 2,522	4,059 / 1,841
	5 ft. / 1.5 m	4,903 / 1,857	8,207 / 3,723	5,356 / 2,429	3,353 / 1,521
	0 ft. / 0 m	8,453 / 3,834	6,251 / 2,835	3,932 / 1,784	

\* Lifting capacities calculated at 100% operating pressure

\* Lifting capacity is limited by stick boom hydraulic capacity

\* Maximum load must never exceed - 10,245 lbs (4,647 kg)

We reserve the right to change specifications & improve our products without notice or obligation



# YOUR NEW LOADER AWAITS!

CONTACT OUR TEAM TODAY!

(218) 834-5118

[serco@sercoloaders.com](mailto:serco@sercoloaders.com)

[sercoloaders.com](http://sercoloaders.com)



SR-CA-75XR-E-22-01